

SEMIRARA MINING & POWER CORPORATION

Annual Stockholders' Meeting

Manila Golf Club, 4 May 2015, 10 AM

The image features a large, dark silhouette of industrial machinery, including what appears to be a crane or conveyor system, set against a solid orange background. The silhouette is positioned in the lower half of the frame, sloping upwards from left to right. In the bottom left corner, the text 'TOWARDS GREATER VALUE' is written in white, bold, uppercase letters, following the slope of the machinery silhouette.

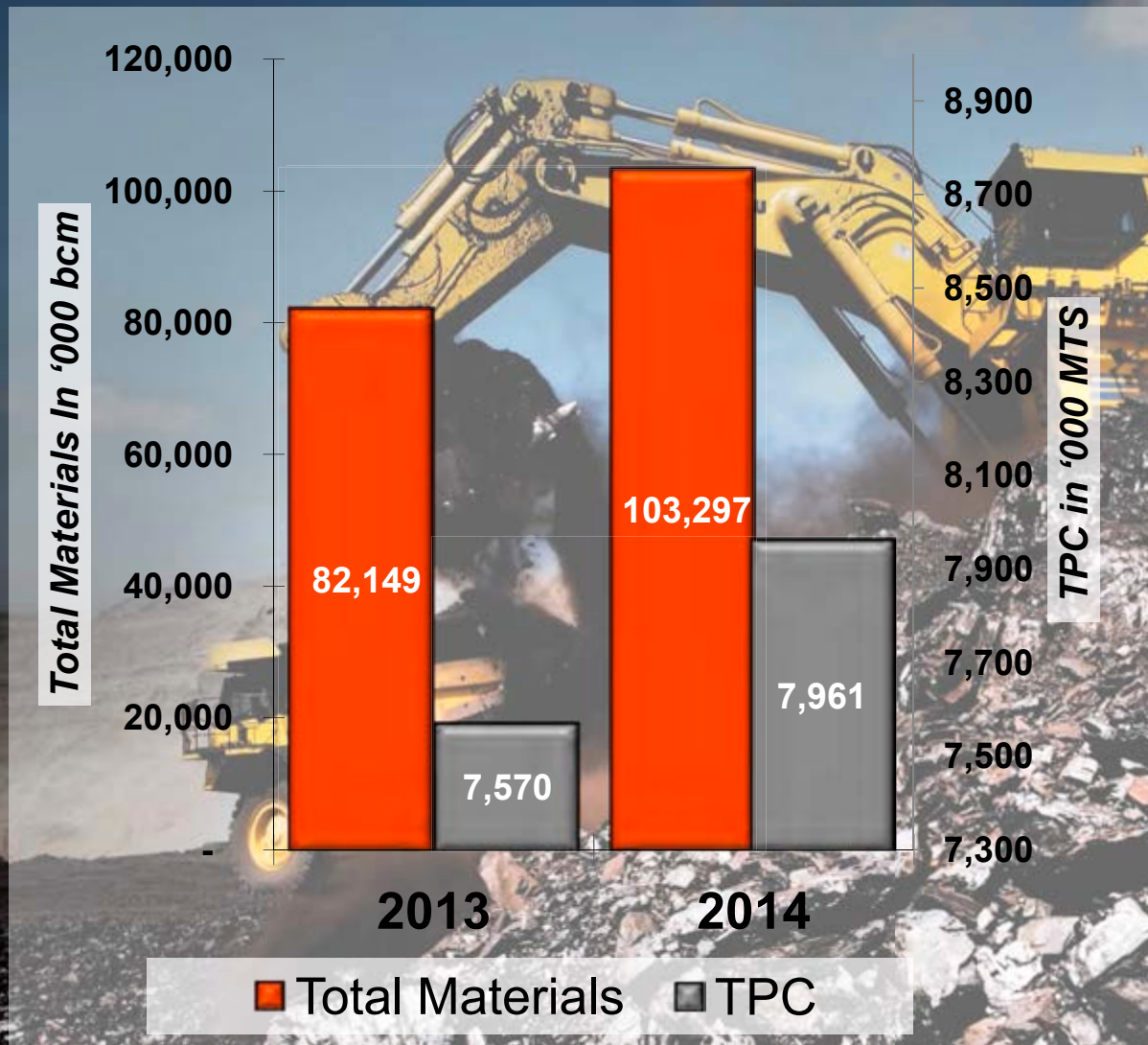
**TOWARDS
GREATER
VALUE**

NEW CORPORATE NAME



On 18 August 2014, the Securities and Exchange Commission approved the Company's application to change its corporate name to Semirara Mining and Power Corporation

TOTAL MATERIALS MOVED / TOTAL PRODUCT COAL

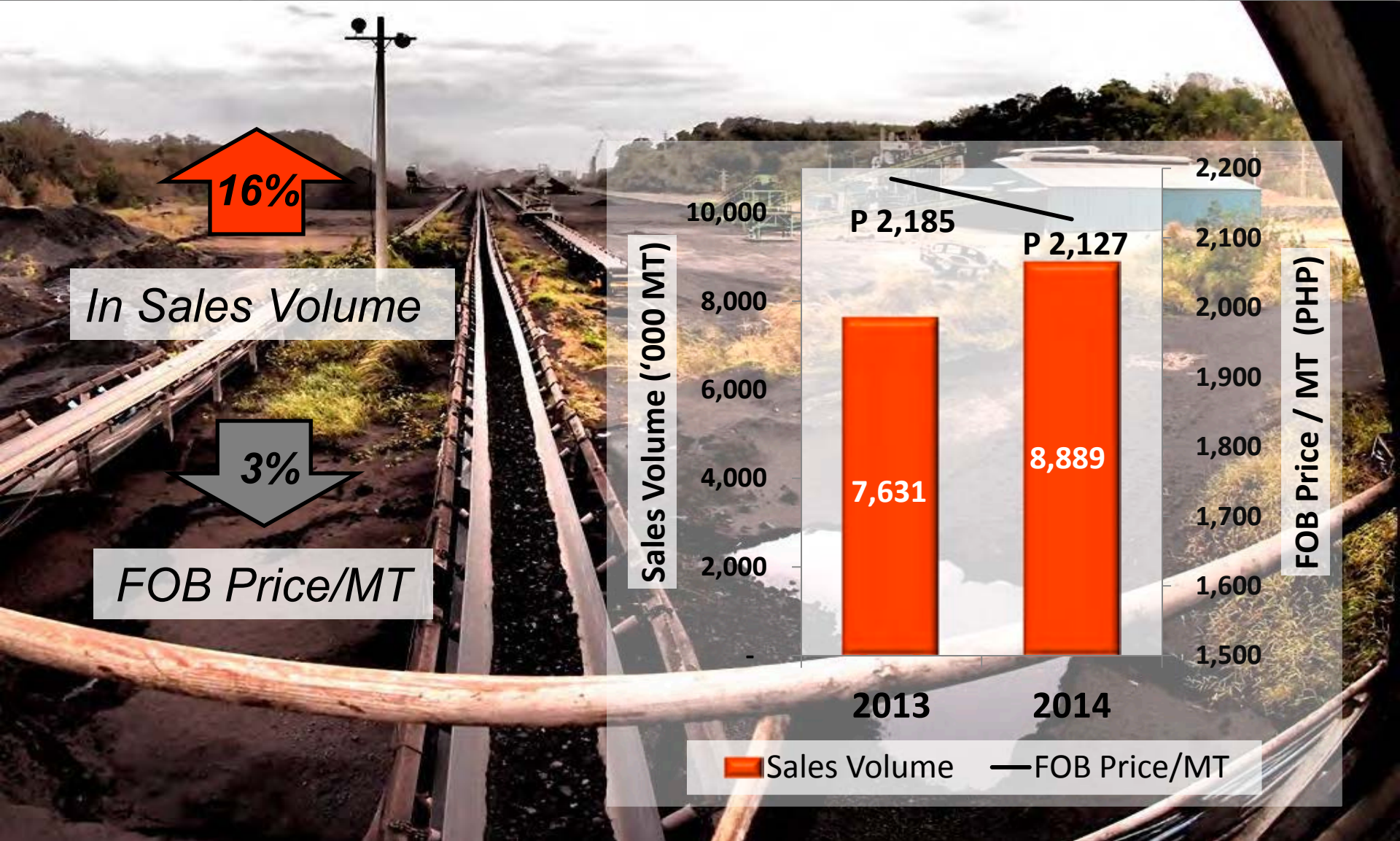


26%
in Total Materials

5%
in TPC

COAL SALES

In '000 MTs

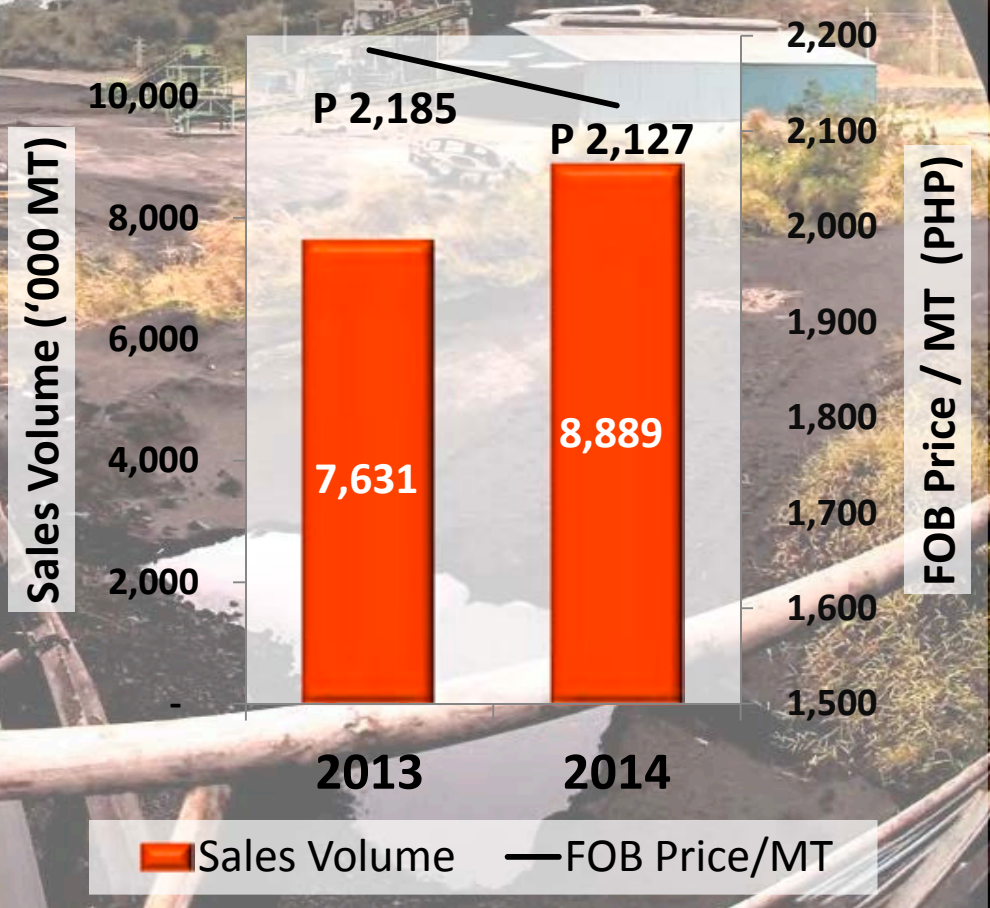


16%

In Sales Volume

3%

FOB Price/MT

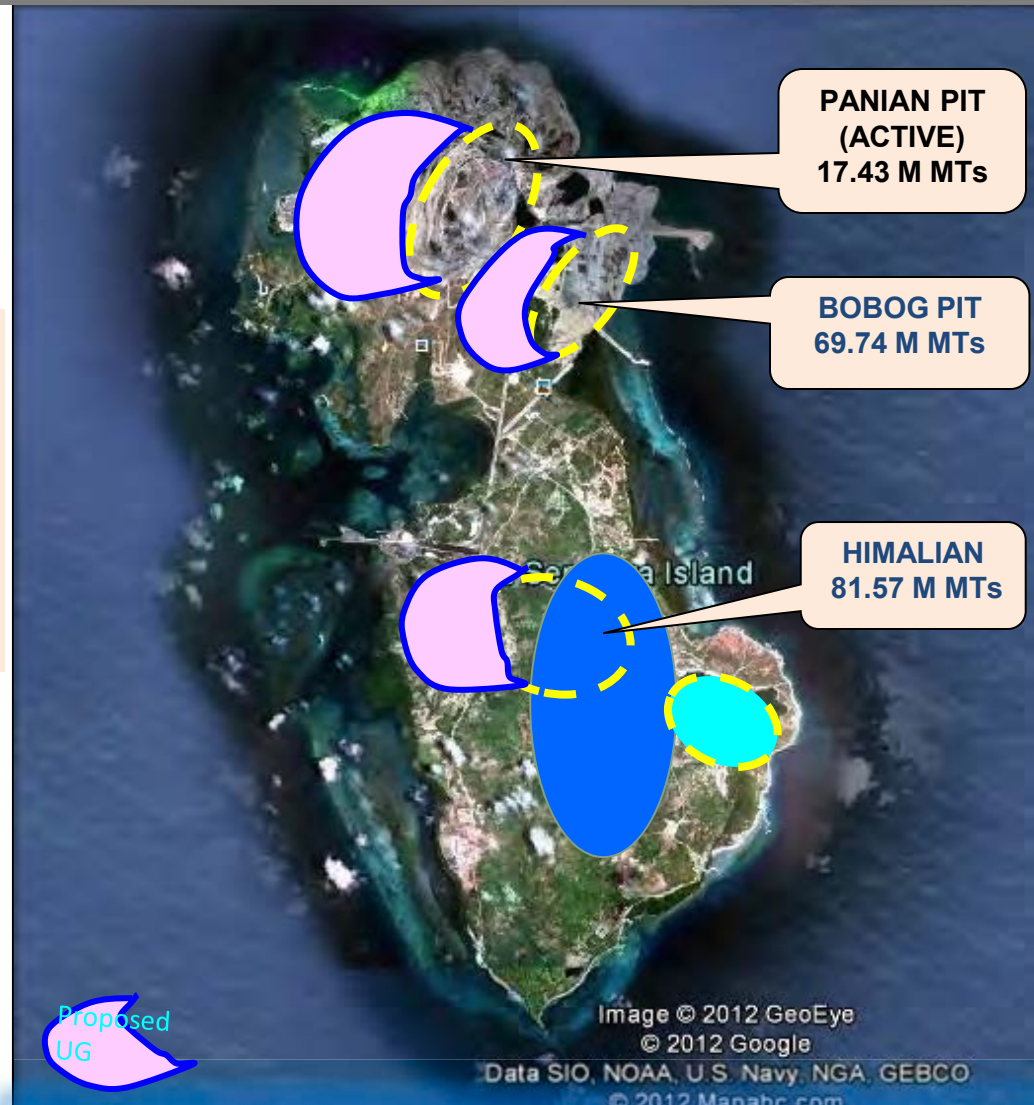




COAL RESERVES

As of 31 December 2014

*Panian	17.43 million MTs
*Bobog	69.74 million MTs
**Himalian	81.57 million MTs
Total	168.74 million MTs



Total Land Area = 55 sq.km (5,500 hectares)

*Philippine Mineral Reporting Code-compliant Reserve Report

** Monenco Consultants Limited, 1990

COAL EXPLORATION



Exploration activities in the island yielded additional substantial reserves in 2014.



FORWARD INTEGRATION

Coal to Power



1

Exploration
& Dev't



2

Coal
Extraction



3

Stockpiling



4

Processing



5

Rehabilitation



6

Shipping



7

Combustion



8

Generation



9

Delivery
of Energy

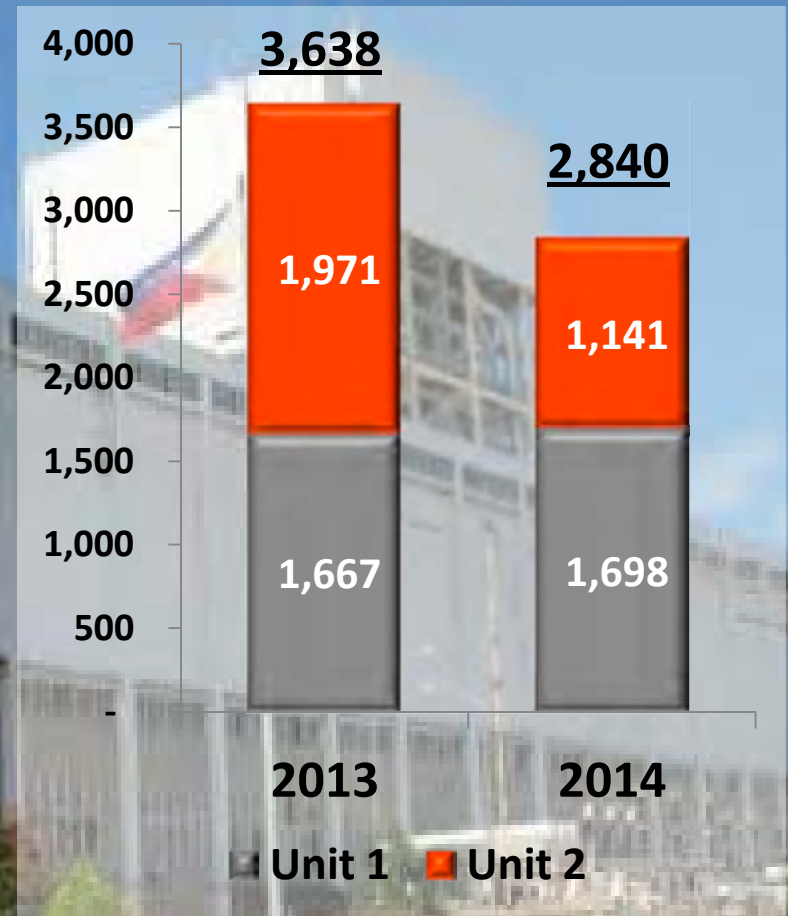




GROSS GENERATION

In GWh

22%

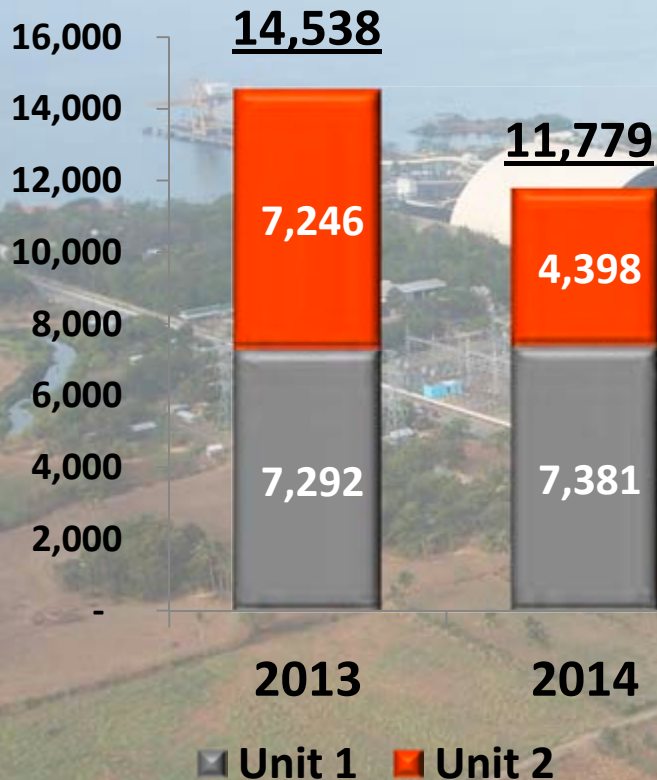




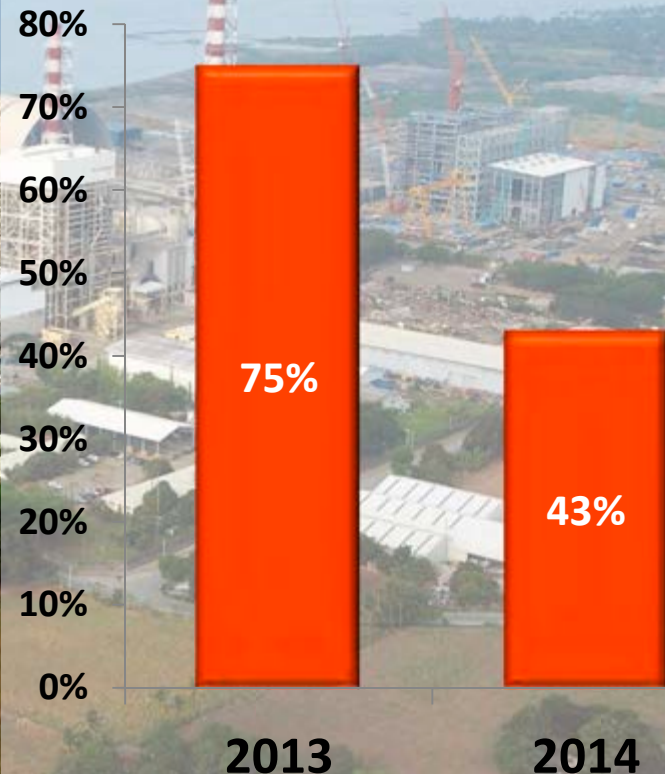
TOTAL OPERATING HOURS / CAPACITY FACTOR

19%

Total Operating Hours

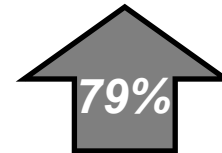
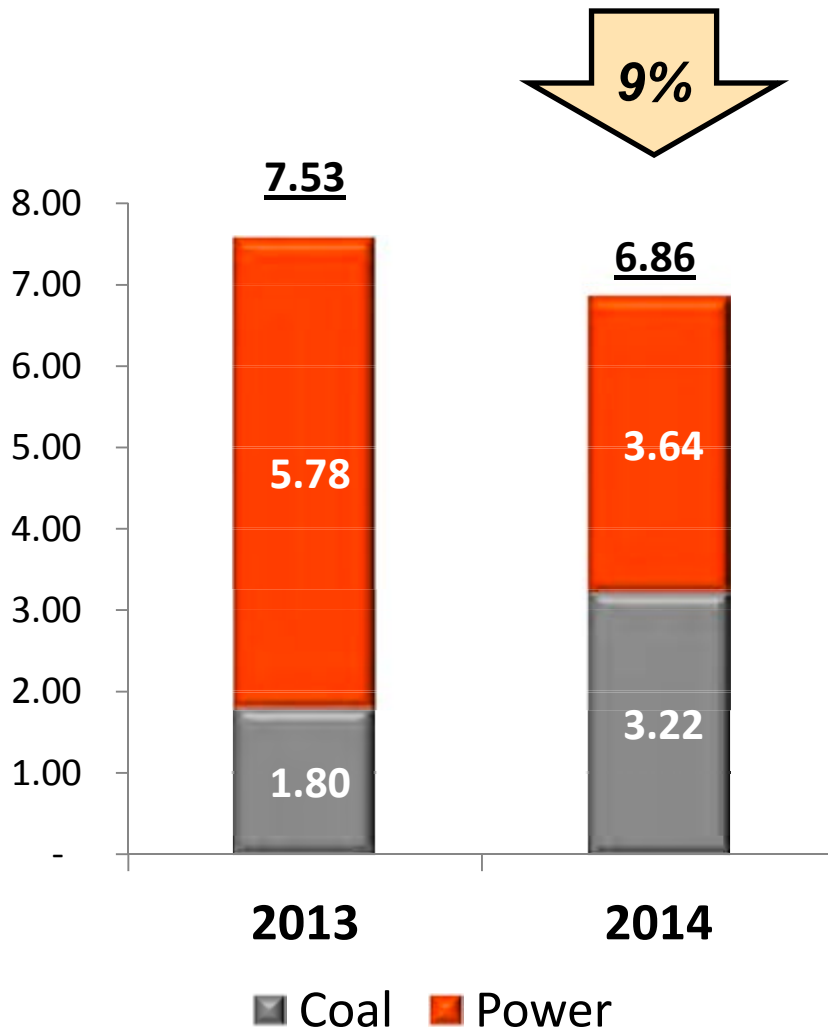


Capacity Factor

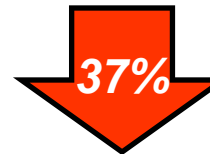


CONSOLIDATED NIAT

In billion pesos



in Coal NIAT



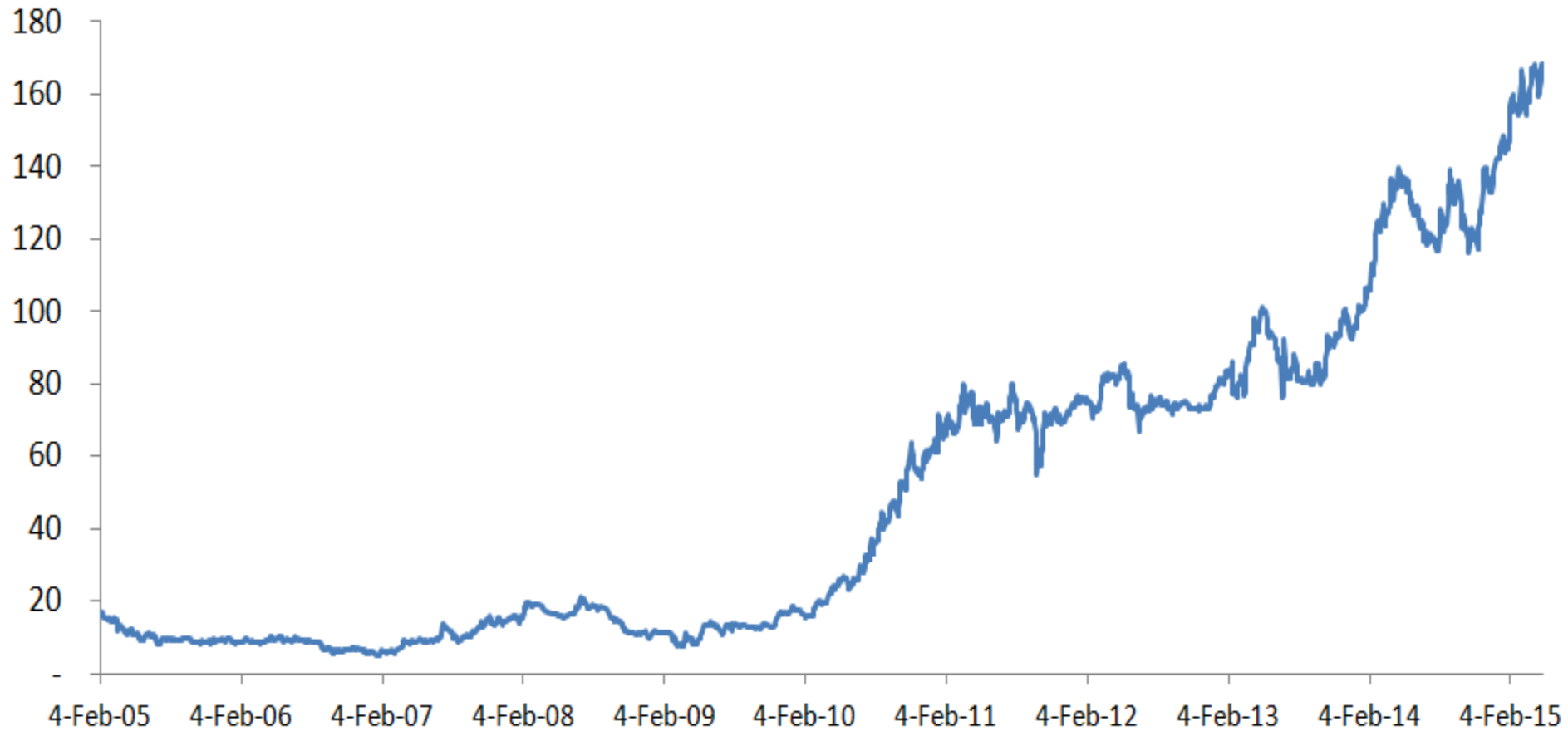
in Energy NIAT



**Net of eliminating entries*



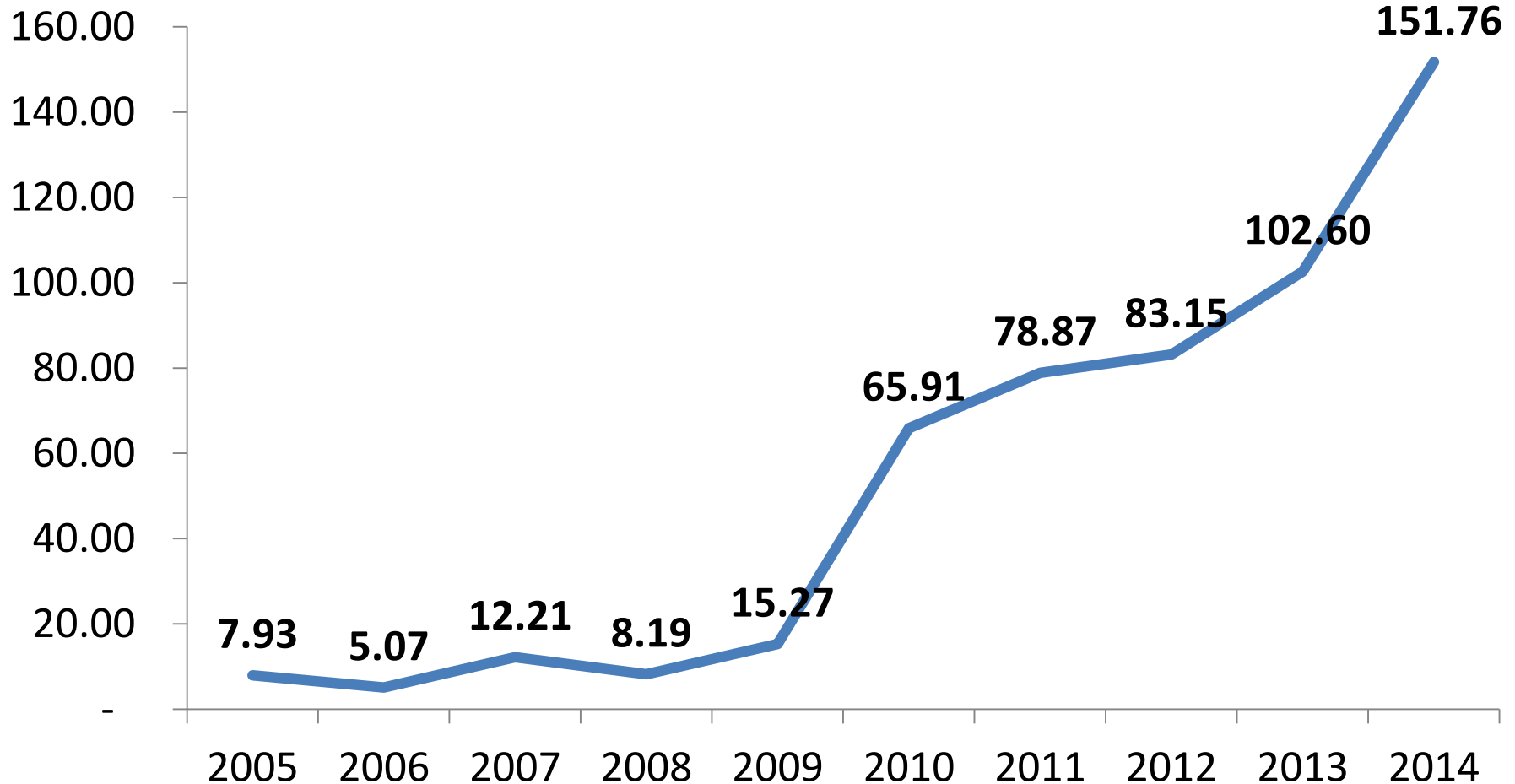
SCC STOCK PRICE MOVEMENT





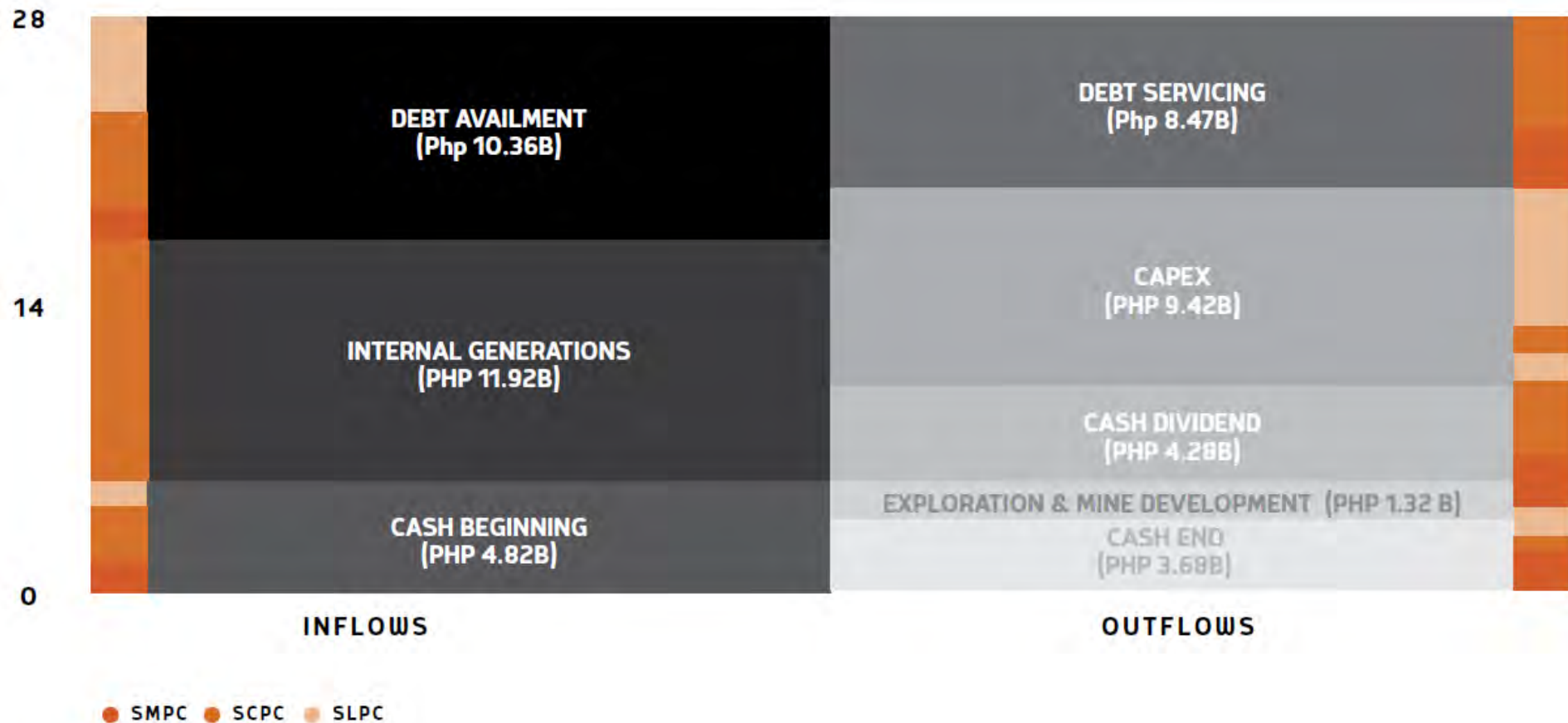
SCC MARKET CAPITALIZATION

In billion pesos

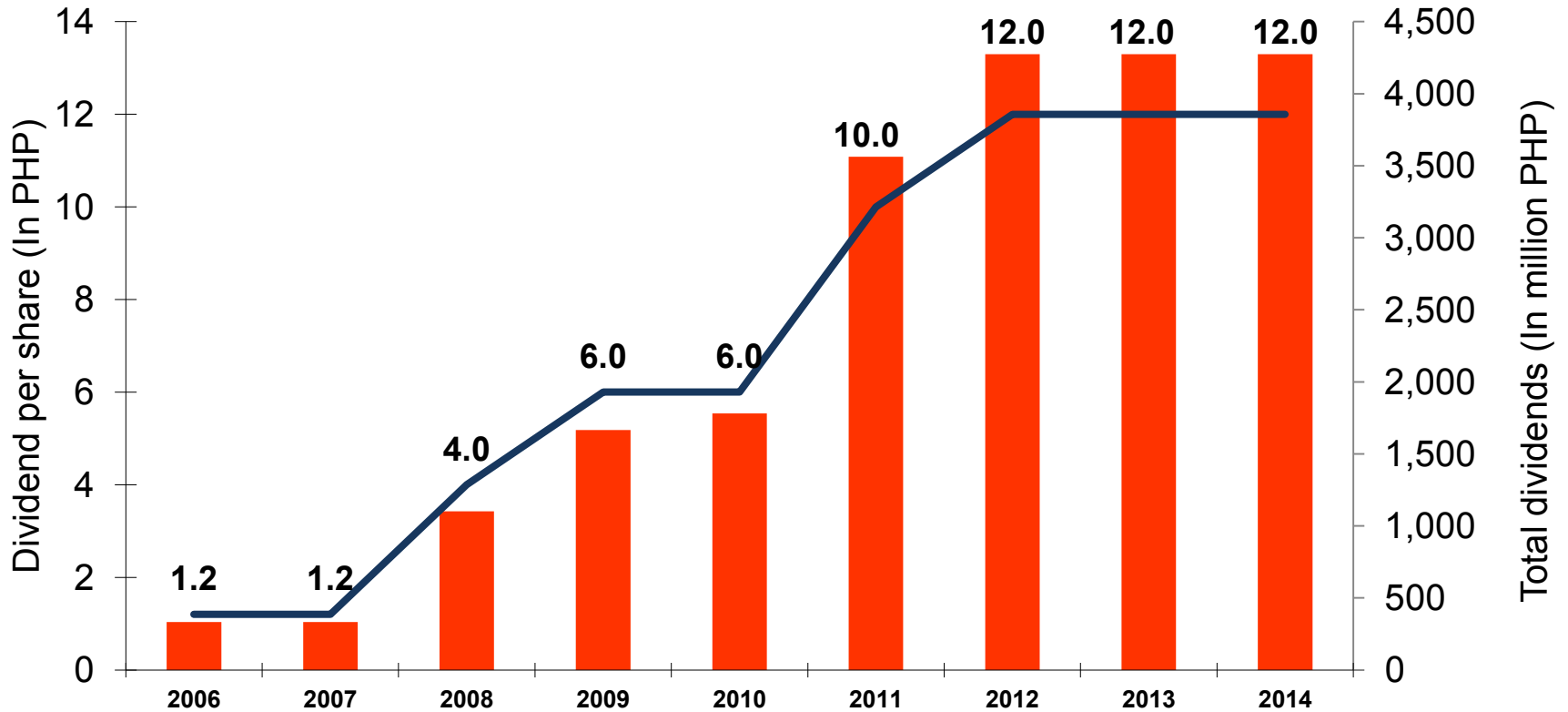


CASH GENERATION & UTILIZATION

Consolidated



HISTORICAL DIVIDENDS



Payout Ratio-

21% **55%** **175%** **209%** **101%** **143%** **78%** **81%** **80%**

Dividend Policy

20% of previous year's NIAT

SCPC ISO CERTIFICATION



In July 2014, Sem-Calaca Power Corporation was certified as conforming to the requirements of ISO 9001:2008 on Quality Management System

SOUTHWEST LUZON POWER GENERATION CORPORATION

Phase 1 Expansion



Phase I Expansion:

- **2 x 150 MW**
 - **EPC Contractor: DMCI**
 - **EPC Subcontractor: CNEEC**
- **CFB technology**
 - **Uses low grade coal**
 - **Reduced emissions (SO_x, NO_x)**

The 2 x 150 MW power capacity expansion project, under Southwest Luzon Power Generation Corporation are expected to start contributing to revenue in 2015.



SOUTHWEST LUZON POWER GENERATION CORPORATION

Phase 1 Expansion



Stacker - Reclaimer



Conveyor Gallery



Maintenance bay



COAL: STRONG CORE



Coal will remain to be our strong core business, we aim to make operations more productive and cost-efficient by tapping latest mining technologies.

AWARDS AND ACHIEVEMENTS



**INSTITUTE OF
CORPORATE
DIRECTORS**

*Top 50 Philippine PLCs 2014 ASEAN Corporate Governance Scorecard (ACGS) Run
- Based on the review conducted by ICD, tasked by SEC as the ranking body*

AWARDS AND ACHIEVEMENTS



***2014 FinanceAsia's Best Philippine Companies
- Strong Dividend Policy
- Best Corporate Social Responsibility***



CORPORATE SOCIAL RESPONSIBILITY

5 E's - Coal



Hippopus hippopus



CORPORATE SOCIAL RESPONSIBILITY

5 E's - Power





CORPORATE SOCIAL RESPONSIBILITY

Education and Skills Training

Tinogboc Elementary School



Semirara National High School



Semirara Elementary School



40 High School classrooms and 42 Elementary School classrooms were built by the Company for the public schools in Semirara island, catering to 4,500 students every day.



CORPORATE SOCIAL RESPONSIBILITY

Education and Skills Training



Symbolic turnover of classrooms to DECS Sec. Armin Luistro on 17 February 2015.



CORPORATE SOCIAL RESPONSIBILITY

Education and Skills Training



*Dacanlao National High School,
Calaca Batangas*

34 High School classrooms and 25 Elementary School classrooms were built by the Company for the public schools in Batangas.

CORPORATE SOCIAL RESPONSIBILITY

Education and Skills Training



The Divine Word School of Semirara is a private school for employees' dependents. Top students in the island are also admitted on full scholarship.



CORPORATE SOCIAL RESPONSIBILITY

Environment



*Since 2000, the Company planted a total of 2.2 million trees, including mangroves.
- 1,639,777 hills of native trees and 48,679 hills of agro-forest trees*



CORPORATE SOCIAL RESPONSIBILITY

Environment



*Since 2000, the Company planted a total of 2.2 million trees, including mangroves.
- 1,639,777 hills of native trees and 48,679 hills of agro-forest trees*



CORPORATE SOCIAL RESPONSIBILITY

Environment



*Since 2000, the Company planted a total of 2.2 million trees, including mangroves.
- 1,639,777 hills of native trees and 48,679 hills of agro-forest trees*



CORPORATE SOCIAL RESPONSIBILITY

Environment



*80 has of mangoves, part of the 250 has planted in Semirara island
- Total mangoves planted: 493,514 hills*



CORPORATE SOCIAL RESPONSIBILITY

Environment



17/06/2014 09:40

*80 has of mangoves, part of the 250 has planted in Semirara island
- Total mangoves planted: 493,514 hills*



CORPORATE SOCIAL RESPONSIBILITY

Environment



*80 has of mangoves, part of the 250 has planted in Semirara island
- Total mangoves planted: 493,514 hills*

CORPORATE SOCIAL RESPONSIBILITY

Environment



Tabunan Marine Hatchery Laboratory – established to lead the Company’s marine rehabilitation and biodiversity development efforts.



CORPORATE SOCIAL RESPONSIBILITY

Environment



Tridacna maxima



Tridacna gigas

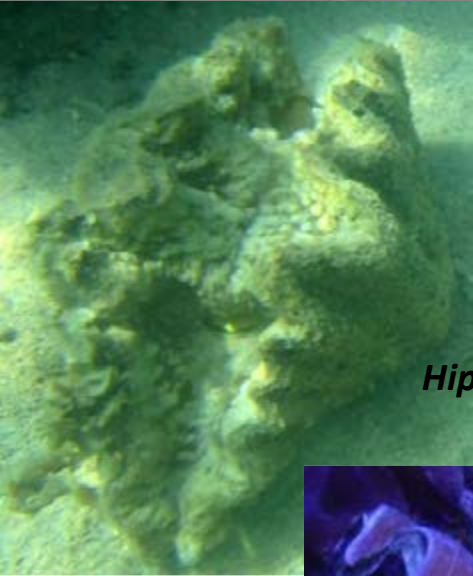


Tridacna derasa

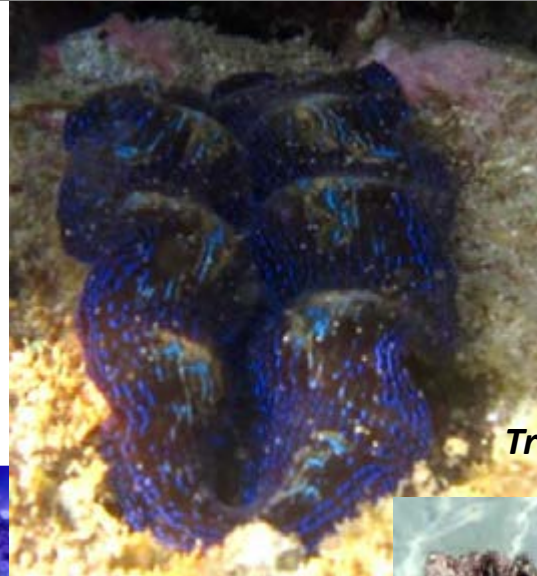
The Semirara Marine Hatchery Laboratory has around 108,000 pieces of the seven species of endangered giant clams.

CORPORATE SOCIAL RESPONSIBILITY

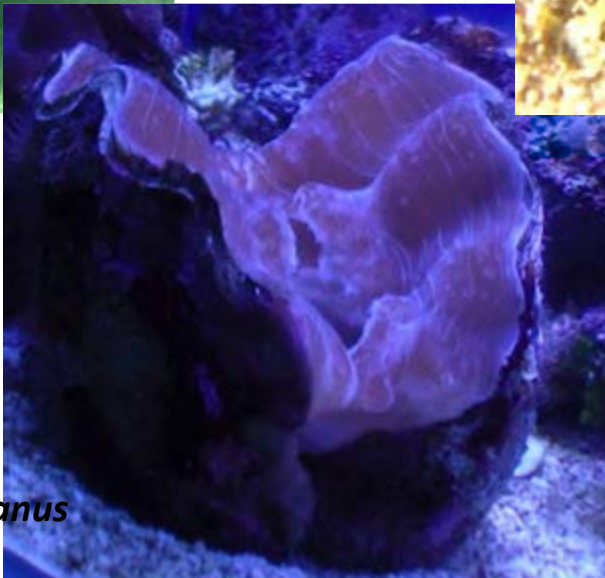
Environment



Hippopus hippopus



Tridacna crocea



Hippopus porcellanus



Tridacna squamosa

The Semirara Marine Hatchery Laboratory has around 108,000 pieces of the seven species of endangered giant clams.



CORPORATE SOCIAL RESPONSIBILITY

Environment



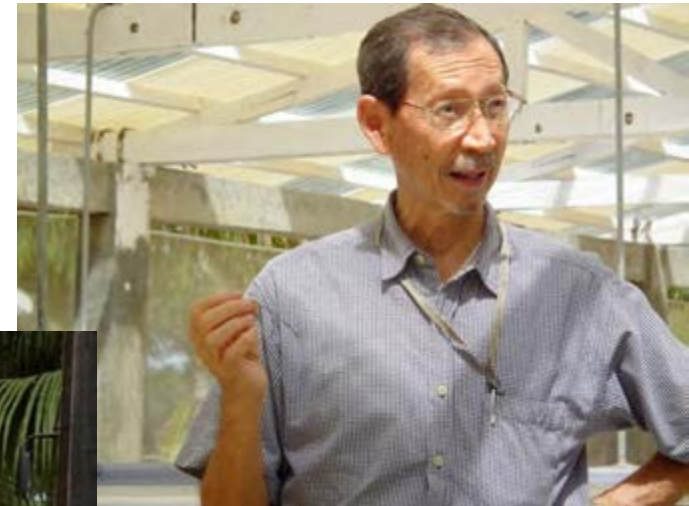
Algal House

CORPORATE SOCIAL RESPONSIBILITY

Environment



Dr. Trono & Dr. Estrallada in the Algal Room



Dr. Edgardo Gomez



Dr. Angel Alcala

The success of the hatchery is made possible with the management of Dr. Ronnie Estrellada, and also with the help of national scientists Dr. Gavino Trono , Dr. Edgardo Gomez, and Dr. Angel Alcala



CORPORATE SOCIAL RESPONSIBILITY

Environment



Raceway



CORPORATE SOCIAL RESPONSIBILITY

Post Yolanda: Rebuilding Leyte



9-classroom building for Manlilisid National High School in Javier, Leyte



CORPORATE SOCIAL RESPONSIBILITY

Post Yolanda: Rebuilding Leyte



529 bancas for the fisherfolk of Leyte



CORPORATE SOCIAL RESPONSIBILITY

Post Yolanda: Rebuilding Leyte



529 bancas for the fisherfolk of Leyte



CORPORATE SOCIAL RESPONSIBILITY

Emergency Preparedness



We have intensified disaster preparedness in the island through a multi-sectoral management and first responders training in 2014.



CORPORATE SOCIAL RESPONSIBILITY

Emergency Preparedness





CORPORATE SOCIAL RESPONSIBILITY

Emergency Preparedness

In collaboration with the Municipality of Caluya, we are helping build houses to relocate families living within the danger zone in .





CORPORATE SOCIAL RESPONSIBILITY

Emergency Preparedness



Tinogboc National High School – the first recipient of multi-purpose gyms that the Company is constructing. These can serve as evacuation centers during calamities, and can withstand 300 kph of wind

CORPORATE SOCIAL RESPONSIBILITY

Emergency Preparedness



Tinogboc National High School – the first recipient of multi-purpose gyms that the Company is constructing. These can serve as evacuation centers during calamities, and can withstand 300 kph of wind



CORPORATE SOCIAL RESPONSIBILITY

Mary Help of Christians Theology Seminary



San Fabian, Pangasinan



CORPORATE SOCIAL RESPONSIBILITY

Mary Help of Christians Theology Seminary



San Fabian, Pangasinan



CORPORATE SOCIAL RESPONSIBILITY

Parish of our Lady of the Abandoned



Mandaluyong City



CORPORATE SOCIAL RESPONSIBILITY

Parish of our Lady of the Abandoned



Mandaluyong City



CORPORATE SOCIAL RESPONSIBILITY

Virgen Milagrosa Del Rosario



Balanga, Bataan



CORPORATE SOCIAL RESPONSIBILITY

Virgen Milagrosa Del Rosario



Balanga, Bataan

Thank you...

**TOWARDS
GREATER
VALUE**

A large black silhouette of an industrial facility, possibly a refinery or power plant, is positioned against a bright orange background. The silhouette includes various structures, pipes, and a crane. A long, thin arrow points from the top of the facility towards the right side of the frame. The overall composition is a diagonal split between the orange background and the black silhouette.